



QUILTS.COM

I N T E R N A T I O N A L

# QUILT FESTIVAL

2020

**SEE** more than 550 great quilts and fiber art works on display! **SHOP** at nearly 300 booths! **FREE** demos! And 35+ classes.

**LONG BEACH, CA**

### Show Dates

July 9-11 (10 AM-5 PM)

### Classes

begin July 9

### Tours

begin July 8

### Admission

General: \$10

Seniors 65+/Students/Military: \$8

Children 10 and under free  
with paid admission

Full Show Pass: \$25

**MAKE YOUR  
PLANS NOW!**

**Quilts.com**

**shows@quilts.com**

**AND** take a look at the slate of great classes and special events—with class project photos!

### AT THE LONG BEACH CONVENTION CENTER

300 E. Ocean Blvd.  
Long Beach, CA 90802



## SCHEDULE OF EVENTS

<b>WEDNESDAY July 8</b>	
9 AM-5 PM	LA Fashion District Tour
8-11 AM & 2-5 PM	Onsite Enrollment Desk/Kiosks Open <i>(online enrollment always available through Quilts.com)</i>
<b>THURSDAY July 9</b>	
7:30 AM-4 PM	Onsite Enrollment Desk/Kiosks Open <i>(online enrollment always available through Quilts.com)</i>
8:30 AM-5 PM	RJR/Hoffman Fabrics Tour
8 AM-5 PM	Longarm Classes
9 AM-5:00 PM	Classes
10 AM-5 PM	<b>SHOW FLOOR OPEN</b>
<b>FRIDAY July 10</b>	
7:30 AM-4 PM	Onsite Enrollment Desk/Kiosks Open <i>(online enrollment always available through Quilts.com)</i>
8 AM-5 PM	Longarm Classes
9 AM-5 PM	Classes
10 AM-5 PM	<b>SHOW FLOOR OPEN</b>
1-2 PM	Lecture—David Taylor— <i>Who Am I to Judge?</i>
<b>SATURDAY July 11</b>	
7:30 AM-2 PM	Onsite Enrollment Desk/Kiosks Open <i>(online enrollment always available through Quilts.com)</i>
8 AM-5 PM	Longarm Classes
9 AM-5 PM	Classes
10 AM-5 PM	<b>SHOW FLOOR OPEN</b>
1-2 PM	Lecture—Charlotte Angotti, Kimberly Einmo, Karen K. Stone— <i>Progressive Reveal</i>

### COVER QUILT:

*Rainbow Stars* (detail), by Clydene Sigle and quilted by Joy Johnson.  
Design source: Chris Stiasny pattern/Absolutely Positively Quilt Designs.  
Photo by Sarah Heller.

2020 • LONG BEACH

# INTERNATIONAL QUILT FESTIVAL

## TABLE OF CONTENTS

Schedule of Events	2
Show Info	3
Special Exhibits	4
International Quilt Association	6
Faculty	7
Class and Event Listings	8
Open Studios™/Room to Sew	10
Classes by Category	11
■ Thursday, July 9	12
■ Friday, July 10	14
■ Saturday, July 11	16
Tool Time	18
Festival Rules	19
Enrollment Instructions	19
Festival App	BC

**Any questions?** Call 713-781-6864; fax 713-781-8182;  
email [shows@quilts.com](mailto:shows@quilts.com), or access [Quilts.com](http://Quilts.com)

## ADMISSION

General: \$10 • Seniors 65+ / Students / Military: \$8 • Full Show Pass: \$25

- **Important Note:** If you enroll in classes, you do not need additional daily admission tickets. Your enrollee badge serves as your entrance to the show floor.

Beginning in April, advance tickets will be available on our website ([Quilts.com](http://Quilts.com)) that you can pay for online and print at home.

## ORGANIZATION & TOUR GROUP ADMISSION

(GROUPS OF 25 OR MORE)

Please call 713-781-6864 or email [shows@quilts.com](mailto:shows@quilts.com) to make arrangements.

Tickets and packages must be purchased by June 26, 2020.

- Discount Single Day Admission + Show Program—\$9 per person
- Each additional day admission—\$8 per person
- No group discount Full Show passes.

**Note:** For group or tour participants enrolling for classes, please see the enrollment instructions.

## HOW TO GET THERE AND GET AROUND

Festival has negotiated special discounts with the following businesses.  
Contact them directly and be sure to mention *International Quilt Festival*.

### AIRLINES

#### UNITED

Contact United's MeetingWorks™ Desk at 1-800-426-1122 Mon.-Fri. from 7 am-9 pm, or Sat. & Sun. from 8 am-6 pm (CT). You must mention **Agreement Code 124087** and **Z Code ZHTK** to receive the discount. Or book online at [United.com](http://United.com) and enter **ZHTK124087** under "Offer Code."

#### DELTA/KLM/AIR FRANCE

Delta Airlines is pleased to offer special discounts for Quilts, Inc. Call the Meeting Services Reservation Desk at 1-800-328-1111, Mon.-Fri. from 7 am-7:30 pm, (CT). Mention Meeting Ticket Designator code **NMTSW**. Visit the Long Beach Festival section at [Quilts.com](http://Quilts.com) under airline link to book online. The discount is only good for flights originating in the U.S. or Canada.

### CAR RENTAL & SHUTTLE

#### HERTZ

Call 1-800-654-2240 in the U.S./Canada or 1-405-749-4434 elsewhere. You must mention the show and refer to discount code **CV#02TQ0021**. Visit the Long Beach Festival section at [Quilts.com](http://Quilts.com) under car rental link to book online.

#### SUPERSHUTTLE

For a discount of 10% in participating cities, reserve online at [SuperShuttle.com](http://SuperShuttle.com) and input **QUILT** as the discount code. You can also call 1-800-BLUE-VAN, but the discount will not apply.

### HOTEL

The discounted room price is good to the capacity of Festival's room block and does not include state and local taxes or parking fees. Any offers from other lodging facilities are not endorsed by Quilt Festival Long Beach.

#### RENAISSANCE LONG BEACH HOTEL\*

111 East Ocean Boulevard  
Long Beach, CA 90802  
Phone: 1-562-437-5900  
Dates: Mon., July 6–Sun., July 12  
Rates: Single/Double \$169 • Triple \$184 • Quad \$199  
Cut-off Date: June 15, 2020

*\*All reservations must be accompanied by a first night room deposit.*

You can also book online at [Quilts.com](http://Quilts.com) in the "Long Beach Festival > Travel & Lodging" link.

## QUILT ANGELS NEEDED!

Pre-qualify for a halo in Quilt Heaven by becoming a Quilt Angel here on earth! You'll gently handle the special exhibit quilts as a "white glove" guardian—protecting quilts from being touched by eager fingers and showing them to visitors who want to see the back or check out a detail.

Three hours earns you a specially-designed Quilt Angel pin. All Angels who serve six volunteer hours receive the pin and a free class catalog and priority advance enrollment for next year's Festival. To volunteer, there will be a link and information on your class confirmation email. Follow the instructions and then you will be contacted by IQA's Quilt Angel coordinator. Questions? Email [worktheshow@quilts.com](mailto:worktheshow@quilts.com).

## QUESTIONS? CONNECT WITH US!

[Quilts.com](http://Quilts.com)  
[shows@quilts.com](mailto:shows@quilts.com)



[/QuiltFestival](https://www.facebook.com/QuiltFestival)



[@QuiltFestival](https://twitter.com/QuiltFestival)

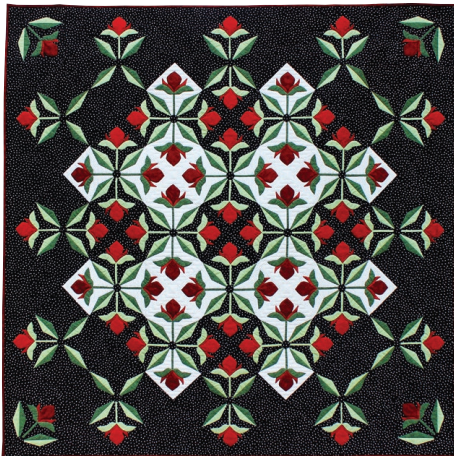


[@QuiltFestival](https://www.instagram.com/QuiltFestival)

## IMPORTANT NOTE ABOUT ROLLING TOTES!

Due to safety and security concerns, Festival attendees are *not* allowed to bring rolling totes, luggage, carries, or suitcases on the show floor. If you have a legitimate medical need for one of these items, please contact the Festival offices (713-781-6864 or [shows@quilts.com](mailto:shows@quilts.com)). Or you may bring a doctor's note or medical papers to the Information Desk/Exhibitor Registration in the lobby to apply for a special pass.

# SPECIAL EXHIBITS



(Top) *Mediterranean Rose* (57" x 57") by Susan Arnold, inspired by a block in *Quiltmaker* magazine. From the exhibit "In the American Tradition."

(Middle) *Pineapple 24/7* (44" x 44") by Gyleen X. Fitzgerald. From the exhibit "The 10<sup>th</sup> Anniversary: Trash to Treasure Pineapple Challenge, Take 2." Sponsored by *Colourful Stitches*.

(Bottom) *Manitou Sunset* (detail), design from a Steve Loveless photo. From the exhibit "Dune Seasons by Ann Loveless."

## THE 10TH ANNIVERSARY: TRASH TO TREASURE PINEAPPLE CHALLENGE, TAKE 2

Sponsored by *Colourful Stitches*

Under the cheerleading of teacher/artist Gyleen X. Fitzgerald, quilters from around the globe have created scrappy and stylized Pineapple quilts. The quilts here show how this one classic, but versatile block can be adapted to create works in traditional, contemporary, Modern, or any other quilting genre with just a simple placement of fabric.

## THE 1876 CENTENNIAL QUILT PROJECT

Organized by *Anne Dawson and Karen B. Alexander*

After discovering an extraordinary antique quilt in an online quilt history forum and securing permission from its owner, a group of women from northwestern Washington began the journey of patterning and creating "new" versions of what was the 1876 Centennial Quilt. Set in a unique Medallion-style arrangement, each work features more than 70 different patterns apiece.

## APPLIQUÉ: THE TIMELESS BEAUTY OF BRODERIE PERSE

Curated by *Cynthia Collier*

Chintz and broderie perse quilts first became popular in the late 18<sup>th</sup> to mid-19<sup>th</sup> centuries. Fueled by a passion for chintz, toile, and pillar print reproduction fabrics, today's traditional-minded quilters are carrying on this important part of textile history with their own beautiful examples.

## ART DECO INSPIRED QUILTS

Inspired by geometric designs, streamlined forms, and sometimes offbeat colors, the Art Deco movement was stylish, influential, and omnipresent from 1925 through the 1940s. Art Deco was reflected in paintings, crafts, fine arts, architecture, and is carried on here in these quilts.

## ART NOUVEAU – CRAFT AS ART

From the 1880s until World War I, western Europe and the United States saw the development and ascent of the Art Nouveau style. Taking inspiration from the unruly aspects of the natural world, Art Nouveau influenced art and architecture, the applied arts, graphic work, and illustration. Some of its best-known practitioners include Toulouse-Lautrec, Tiffany & Company, Alphonse Mucha, and William Morris.

## BACKYARD ESCAPES

This special Sacred Threads exhibit is designed to be seen as if in a sterile hospital setting. What brings peace in a backyard? Either real or imaginary, urban or rural, it can be something small like a blade of grass or large like an expansive view of a lake. What brings tranquility? The color palette, or the light in morning or evening? The artists here let their imagination inspire them to create something beautiful for patients and their families as viewed in a hospital setting.

## BEST OF THE WEST COAST GUILDS: AWARD-WINNING TRADITIONAL QUILTS

The west coast of the United States is home to scores of quilt guilds and groups where members meet to share friendship, experiences, and create new works. This exhibit features some of the best traditional work done by quilters of all styles—appliquéd, pieced, wholecloth—and skill levels.

## BOTH SIDES NOW

This collection of quilts by Kathy York proves — and very visually — that there really are "two sides to every story." The front of each work here tells a tale from one point of view, while the back artwork counters with the opposite perception. It makes for a really unique exhibit and invites the viewer to be swayed...either way!

## A CELEBRATION OF COLOR

Whatever your style...quilt colorfully! This annual judged competition and exhibit features works—created in a variety of styles and techniques—with vibrant and colorful designs. Awards include a \$500 Best of Show, and three \$100 prizes each in Traditional, Modern, and Art categories.

## DUNE SEASONS BY ANN LOVELESS

This exhibit consists of eight panels depicting the beauty of northern Michigan and its seasonal changes. Working from photographs, Loveless created her realistic panoramic landscape scenes with her original “collage” art quilt technique. Spring symbolizes renewal with awakening leaves and flowers. Summer depicts a sunset, water, dune grass, and birch trees in full bloom. Autumn is represented by warm and vivid colors. And Winter is showcased as nature goes into hibernation.

## HANDS ALL AROUND

Artists from around the world incorporate influences from their own cultures into the design and technique of their quilts. This prestigious, long-running international showcase includes a variety of recent quilts from international artists.

## IN THE AMERICAN TRADITION

*Sponsored by Taylor Seville*

Contemporary quiltmakers often look to the art form’s rich tradition for inspiration in their own works. This exhibit features recently-made quilts that incorporate traditional blocks, styles, and/or techniques.

## LIFE’S A BEACH

Quilts on the Wall is a group of southern California textile artists whose members wholeheartedly believe in the maxim proclaimed in this exhibit’s title. Viewers will experience the fun and excitement of the region’s beach communities. Ride the waves on a paddle board, enjoy the orange and turquoise sunsets, sip a margarita at beachside café, or put on a bikini and flip flops and get a tan!

## MOVIES AND MUSICALS: HOORAY FOR HOLLYWOOD!

Hollywood’s rich artistic history has inspired moviegoers and fed their fantasies ever since the Silent Era. And everyone seems to have their own list of favorite films, actors, actresses, and directors. These quilts are inspired by those celluloid dreams—and the people who helped make them come to life across the decades.

## THE NOBLE MENAGERIE

Creating portraits of farm animals began as a way for Timna Tarr to explore making photo-realistic quilts. Moving through the series, she realized that the images highlight the dignity and individual personalities in each animal. The construction process starts with a photograph blown up to 40" x 40" and ends with the piecing of the eye. That’s because Timna says she needs to get to know each animal before tackling the “window to the soul.”

## QUILTING AS THERAPY

Approximately 5 million people in the U.S. suffer from Post-Traumatic Stress Disorder (PTSD). It can develop after a person has experienced or witnessed a traumatic event in which physical harm was threatened or occurred. A person with PTSD learns skills to cope with the disorder.

## RISING STAR—TERRY GRANT

This annual exhibit features the works of a specially selected quilt artist who has developed and demonstrated substantial creative growth over recent years. The subject for this exhibit is artist Terry Grant.

## SAPPHIRE CELEBRATION

*Sponsored by SewBatik*

Quilters have long used the color blue to symbolize trust, loyalty, wisdom, confidence, intelligence, faith, truth, and heaven. Sapphire is also the chosen gem for 45<sup>th</sup> anniversaries—which International Quilt Festival celebrated last year.

## SAQA: ALOFT

*Sponsored by INNOVA*

Birds, insects, and even some mammals are able to fly and soar. Plant seeds and kites are carried on the breeze. Humankind has always dreamt of ways to fly from the mythological Icarus’ attempt to create his own wings to the advent of airplanes, satellites, and space exploration. This exhibition provides new perspectives through which to see the world above us.

## SAQA: CONNECTING OUR NATURAL WORLDS

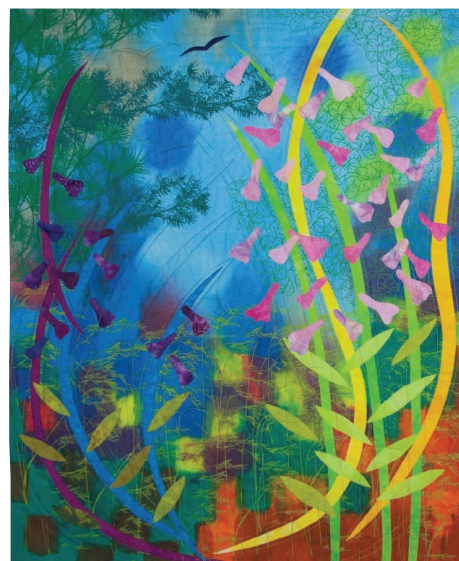
*Sponsored by INNOVA*

This exhibit showcases artwork that beautifully illustrates the natural wonder of habitats around the globe. Each artist has identified danger to flora and fauna in their own backyards and recommended a call to action that can be taken to help save them from extinction. The selected pieces will inspire viewers to get closer to nature and become better stewards for our environment.

## VIEWPOINTS 9: LIVING PLANET

*Curated by Martha Wolfe*

Nine artists from around the world are inspired by the same theme to create different works of art. The impact of language and cultural connotation are evident, as well as political influence and universal environmental concerns. The overall theme of the works is “The Living Planet.”



*Soon the Summer Sun (29" x 41") by Brenda H. Smith. From the exhibit “SAQA: Connecting Our Natural Worlds.” Sponsored by INNOVA.*

# THE INTERNATIONAL QUILT ASSOCIATION—



The 2020 Raffle Quilt—tickets can be purchased onsite at the Long Beach Festival. *Bluebonnet Spring* (78.75" x 79.5") by Judy Garden. Photo by Mike McCormick.

## NEW THIS YEAR!

**If you are enrolling for classes, once you receive your confirmation email, you can sign up to join IQA (or renew your current membership) by following the link provided. If you are not enrolling for classes, email [iqa@quilts.com](mailto:iqa@quilts.com) for membership information. Dues are \$25 for one year or \$75 for three years.**

So become a card-carrying member of IQA today! Find out more at [Quilts.org](http://Quilts.org).

Or visit IQA's Facebook at [facebook.com/InternationalQuiltAssociation](https://www.facebook.com/InternationalQuiltAssociation).

## a worldwide network of quilters!

Join the one organization that promotes and supports that art form with members from all over the planet: The International Quilt Association!

The International Quilt Association (IQA) is the world's only 501(c)(3) non-profit quilting organization that promotes the appreciation and art of quilting around the world.

In 1979, the four founders—Karey Patterson Bresenhan, Nancy O'Bryant, and their mothers, Jewel Pearce Patterson (1910-2002) and Helen Pearce O'Bryant (1914-2005)—set out to create a group that would bring together the varied factions of the quilt world.

Quilt collectors, teachers, artists, retailers, suppliers, and just plain quilt lovers have all joined IQA to help further its goals and form a sense of community—and you can be a part of it!

Members receive IQA's online quarterly journal, *Quilts...A World of Beauty*, featuring informative articles, interviews, book reviews, organizational news, a Teacher's Directory, Judged Show winner profiles, and scores of stunning, full-color photos of quilts from all over the world.

You also receive special privileges at International Quilt Festival in Houston and Long Beach unavailable to non-members. This includes a free day's admission (in both shows) and Preview Night entrance with extra hours, one additional day's free admission, and a private photo opportunity (in Houston). You'll also be eligible to enter your quilt in the annual Judged Show "Quilts: A World of Beauty," or apply for a grant.

And best of all—you get to *keep* your award-winning entry, since IQA's awards are *not* purchase prizes! In 2019, total prize money awarded was \$97,250!



**Charlotte Angotti**  
Louisiana  
[www.CharlotteAngotti.com](http://www.CharlotteAngotti.com)  
205. Progressively Surprised—Progressive Class  
300. Let Me Surprise You!  
405. Let Me Surprise You! One More Time  
420. Lecture—Progressive Reveal



**Megan Best**  
Washington  
[www.BestQuilter.com](http://www.BestQuilter.com)  
426. Longarm Ruler Roundabout! HQ—Capri Hands-on



**Lisa H. Calle**  
Pennsylvania  
[www.LisaHCalle.com](http://www.LisaHCalle.com)  
215. Rulers for Rookies—Longarm Hands-on  
230. Feathers for the Timid—Longarm Hands-on  
310. Perfect Plumes—Longarm Hands-on  
320. Pebbles, Echoes, and Crosshatches, Oh MY!—Longarm Hands-on  
400. Divide and Design, Get It Done!—Longarm Hands-on



**Kimberly Einmo**  
California  
[www.KimberlyEinmo.com](http://www.KimberlyEinmo.com)  
206. Lone Starburst II  
301. Progressive with a Twist Mystery Quilt Class—Progressive Class  
406. Flying Geese Crossing  
420. Lecture—Progressive Reveal



**Gyleen X. Fitzgerald**  
Maryland  
[www.ColourfulStitches.com](http://www.ColourfulStitches.com)  
207. Over and Under Rainbows  
302. Modern Free Wheeling Circles



**Jane Haworth**  
California  
[www.JaneHaworth.com](http://www.JaneHaworth.com)  
303. Dazzling Dogs Fabric Collage  
415. Sunlit Sunflowers Fabric Collage



**Laura Heine**  
Montana  
[www.Fiberworks-Heine.com](http://www.Fiberworks-Heine.com)  
208. Teeny Tiny Flamingo Collage  
304. Flowerfly Collage Class  
407. Teeny Tiny Sewing Machine Collage Class



**Jenny K. Lyon**  
California  
[www.Quiltskipper.com](http://www.Quiltskipper.com)  
325. Free-Motion Fills and Frills on a Domestic Machine  
408. Yes, You CAN Free-Motion Quilt!



**Sarah Maxwell**  
Missouri  
[www.DesignsbySarahj.com](http://www.DesignsbySarahj.com)  
209. Shazam  
315. Party Lights  
425. Sew On the Go



**Jennifer Rapacki**  
Colorado  
[www.JenniferRapacki.com](http://www.JenniferRapacki.com)  
220. DIY Inkjet Printing on Fabric—Hands-on  
231. Fractal That! Design—Designing Fabric the Fun and Easy Way



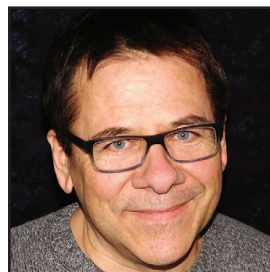
**Catherine Redford**  
Illinois  
[www.CatherineRedford.com](http://www.CatherineRedford.com)  
221. Walking Foot Quilting—Get Out of the Ditch!  
232. Further Steps in Walking Foot Quilting



**Karen K. Stone**  
Texas  
210. Innovative Appliqué—Ogee Lotus  
305. Shellfire and Clamnation  
409. The Other Mystery—Progressive Class  
420. Lecture—Progressive Reveal



**Linda Sullivan**  
California  
[www.Colourwerx.com](http://www.Colourwerx.com)  
410. ColourBugs & Curves



**David Taylor**  
New Hampshire  
[www.DavidTaylorQuilts.com](http://www.DavidTaylorQuilts.com)  
222. What to Look for in a Stationary Sit-Down Longarm—HQ Capri Hands-on  
233. Feel the Rhythm—Learn the Basics of Free-Motion Quilting—Capri Hands-on



306. Timing and Tension—Take Control of Your Free-Motion Quilting—Capri Hands-on  
316. Lecture—Who Am I to Judge?  
416. Fill in the Blanks—Fun, Free-Motion Designs—HQ Capri Hands-on

**NEW!!!—REAL TIME, ONLINE ENROLLMENT WITH IMMEDIATE EMAIL CONFIRMATION**

A new enrollment procedure is now in effect for all Festival classes, events, tours, and lectures. ALL enrollments must be made online through our website at Quilts.com. Enrollment will remain open 24 hours a day beginning in early March (a more specific date will be posted soon) and continuing throughout the show. Please refer to Quilts.com for information on when online enrollment will open. You may review or update your schedule at ANY time with your confirmation number. Please review the refund/cancellation policies below.

Badges will be printed onsite at specialized kiosks when you arrive to check-in. Your badge will provide admission to the show floor and should always be kept with you. Present your badge along with your proof of enrollment—in either print form or displayed on your smartphone from the online enrollment process—to enter all classes, lectures, and special events.

**NEW!!!—WAIT LIST NOW AVAILABLE FOR ALL CLASSES/EVENTS**

At such time as a class/event reaches capacity, a limited Wait List option will be available to those trying to enroll. Should a cancellation occur and a slot become available, a link will be emailed to the first person on the Wait List with instructions that they have 12 hours to modify their schedule online to take advantage of the opening. Lacking a response within that time frame, an email will be sent to the #2 person on the Wait List with instructions that they have 12 hours to modify their schedule online, and so on. At that point, whoever accepts the open slot first will be awarded the class/event. PLEASE NOTE: if you have booked yourself for another event for the time slot of the Wait Listed class/event and do not want to incur the cancellation fees as outlined below, you may choose to not accept the Wait Listed class/event.

**NOTE**

In order to attend any of the classes, lectures, and special events listed in this catalog, you must **enroll online through our website**, paying the overall enrollment fee (\$35) AND the associated fees for each class, lecture, or special event. Exceptions are noted with \*\*\* in event listings and includes lectures only. Tickets to lectures may be purchased onsite at the door of the lecture without paying the \$35 enrollment fee, but you may not purchase lecture tickets in advance without paying the enrollment fee.

**TEACHER'S PET**

Teacher's Pets provide help for Festival teachers by taking roll, passing out materials in class, and running errands. To be selected as the Teacher's Pet for a particular class or lecture you must first enroll for that particular class or lecture, then respond to the link provided in your confirmation email. The first to respond will be chosen as the Teacher's Pet and will receive a Teacher's Pet acceptance email. You will receive the 2020 International Quilt Festival Teacher's Pet pin at the conclusion of your class & duties. Check the sign outside the Education Office or at the Enrollment Desk to see if a Teacher's Pet is still needed for your class and sign up in the Education Office, Room 103C.

**LECTURE FEE****\$10****CLASS FEES****3-HOUR, \$45; 6-HOUR, \$85**

- The fee structure for sit-down stationary longarm classes is 3-HOUR, \$65; 6-HOUR, \$125.
- The fee structure for longarm classes is 4-HOUR, \$85; 8-HOUR, \$165.

**MATERIALS FEES (MAT FEE)**

Total class cost (fee plus materials) is noted on the line with class numbers & titles. An \* indicates materials fee and/or equipment fee included; materials cost is noted below class description. There is not a fee to rent a cutting mat.

**EQUIPMENT FEES (EQUIP FEE)**

The Equipment Fee, which helps pay for the electrical connections and service, is listed in the same place as the Materials Fees. This fee may include:

**SEWING MACHINE CLASSROOMS**

(One person per machine)—\$5 per 3-HOUR class;  
\$10 per 6-HOUR class.

**STATIONARY SIT-DOWN LONGARM MACHINE CLASSROOMS**

(One person per machine)—\$8 per 3-HOUR class;  
\$15 per 6-HOUR class.

**LONGARM MACHINE CLASSROOMS**

(Two persons per machine)—\$14 per 4-HOUR class;  
\$28 per 8-HOUR class.

SCREEN FEE—\$3 per class where teacher requested a screen.

MULTIPLE-ROOM CLASSES—Sewing machine classroom fees in multiple-room classes are only charged for the hours in the machine room.

**ABBREVIATIONS OF MAGAZINE TITLES OR BOOK PUBLISHERS**

<b>AQS</b>	American Quilter's Society
<b>AQM</b>	<i>American Quilter Magazine</i>
<b>BP</b>	Breckling Press
<b>C&amp;T</b>	C & T Publishing
<b>DT</b>	Dragon Threads
<b>EQ</b>	Electric Quilt Company
<b>FW</b>	F & W Publications
<b>KP</b>	Krause Publications
<b>MC</b>	Martingale & Co. (That Patchwork Place)
<b>MQU</b>	Machine Quilting Unlimited
<b>QA</b>	Quilting Arts Magazine
<b>QATV</b>	<i>Quilting Arts TV</i> on PBS
<b>QDP</b>	Quilt Digest Press



## REFUNDS/CANCELLATION FEES

Changes, cancellations, and refunds must be processed through the online registration system. The refund policy is as follows:

- 100% refunds available until June 10.
- 50% refunds available June 11-25.
- 25% refunds available June 26 through the show.
- Refunds for medical/family emergencies will be handled on an individual basis.
- Refunds for serious dissatisfaction onsite will be considered only for a class that has produced multiple complaints. Requests for refunds must be received in writing at the show, within two hours of the conclusion of a morning class or by the next morning for afternoon/evening classes. Requests must be received at the Education Office, Room 103C. Again, refunds for dissatisfaction will only be considered if multiple complaints are received. The percentage of refund will be at Quilts, Inc.'s discretion.
- If cancelling your entire enrollment, the \$35 enrollment fee is non-refundable.

## CANCELLATION OF A CLASS BY MANAGEMENT

Occasionally, because of illness or other emergency, a teacher has to cancel an entire class at the last minute. We try to find a replacement teacher but give you the option of a full refund (including enrollment fee) or taking the same subject from a substitute teacher.

## SELLING OF UNWANTED CLASSES

Once onsite, should you change your mind on a class and want to sell it for full value, you are encouraged to post it "For Sale" on the bulletin board by the Enrollment kiosks. These transactions are strictly between individuals and do not involve Quilt Festival. Appropriate forms will be available onsite.

## GENERAL INFORMATION

Class size varies according to the teacher's preference and the room size. Most classes have no more than 25 students and some have fewer. Stationary sit-down longarm classes can have up to 20 students. Longarm classes can have up to 24 students, two per machine. All sewing machine and stationary sit-down longarm classes will have one student per machine.

You must get the teacher's specific permission before photographing or taping his or her class or lecture. Do not attempt to take flash photos of the projector screen. The photos will not turn out, and the flash distracts everyone else in the audience.

## FOOD ALLERGIES OR SPECIFIC DIETARY REQUIREMENTS

Please contact Jill Benge (ext. 124) or Barbara Cline (ext. 122) at 713-781-6864, by June 26 to inform them of any special considerations for any food event for which you are enrolled.

## MEET OUR EDUCATION DEPARTMENT

Suzanne Hyland, Director of Education and Industry Relations, directs full-time staff members Jill Benge, Education Manager and Barbara Cline, Education Assistant; plus a "show team" that arrives to help at each show.

## EDUCATION OFFICE

Room 103C on the first floor of the Long Beach Convention Center is "command central" for all educational offerings at Quilt Festival. It's also the place to check for classroom lost & founds, to turn in any refund requests or special requests, and to check in as a Teacher's Pet.

Thanks to **Baby Lock, BERNINA of America, Janome America, Inc., and OC Sewing and Vacuum/All Brands** (Husqvarna Viking Sewing Machines). 125 sewing machines are provided for your use in Festival classes.

Thanks to **Handi Quilter**, longarm machines and stationary sit-down longarm machines are provided for your use in Festival classes. Irons are provided courtesy of **Clover, Maytag®, Oliso®, Panasonic, Reliable, and Rowenta®**.

Thanks to the **Daylight Company, LLC**, for providing lights in selected classrooms.

Thanks to the **Decorating Diva** for providing wool iron pads for the classrooms.

Thanks to **Hobbs Bonded Fibers** for providing batting for the longarm classrooms.

Thanks to **Mel's Sewing and Fabric Center/BERNINA of America** for providing Open Studios with two B570QE sewing machines.

## CLASS SYMBOL CODE

<b>E</b>	Every Skill Level
<b>B</b>	Beginner Level
<b>B/I</b>	Beginner/Intermediate Level
<b>I</b>	Intermediate Level
<b>I/A</b>	Intermediate/Advanced Level
<b>A</b>	Advanced Level
<b>H</b>	Hand Sewing
<b>D</b>	Design Work
<b>AP</b>	Advance Preparation Required
<b>MM</b>	Mixed-Media Focus
<b>PJ</b>	Project-Oriented
<b>PC</b>	Process-Oriented
<b>SLA</b>	HQ (Handi Quilter) Stationary Sit-Down Longarm Machines Provided In Class
<b>SM</b>	Sewing Machines Provided In Class
<b>LA</b>	Longarm Machines Provided In Class
<b>CH</b>	Computer-Design Class (Hands-On)

## OPEN STUDIOS

See artists create work right before your eyes. And ask them questions to get hints and inspiration for your own work!

Each day, four artists will be working simultaneously (two hours at a time) in each of the “rooms” (Quilt, Create, Embellish/Paint, Stitch/Sew), demonstrating their craft. A complete schedule will be available in the show program and posted in the area.



Teresa Coates demonstrates in the “Stitch/Sew” area of Open Studios at Houston Festival.

## ROOM TO SEW

See a specially designed sewing room that will inspire and provide ideas for organizing your sewing space and making it more functional. We are also holding a raffle for the entire contents of the room to benefit the nonprofit 501(c)(3) Texas Quilt Museum.



The Room to Sew area at Houston Festival.

## DECIMAL EQUIVALENTS

$\frac{1}{8} = .125$	$\frac{1}{2} = .5$	$\frac{7}{8} = .875$
$\frac{1}{4} = .25$	$\frac{5}{8} = .625$	$\frac{1}{3} = .33$
$\frac{3}{8} = .375$	$\frac{3}{4} = .75$	$\frac{2}{3} = .67$

## CLASS SUPPLIES

Be prepared for class. The Supply List for classes is listed directly after the class description. Bring all listed supplies for each of your classes. If supply link is listed, please visit that website for complete listing. Note: If fabric strip width is given, but not length, cut the strip from selvage to selvage; finished strip = 40–45in long. Read fabric yardage figures carefully!

In most cases, bring paper and pencil for a lecture. Instructor’s permission is needed for photographing or recording a class, class project, or lecture.

## SUPPLY LIST ABBREVIATIONS

addnl	additional
approx	approximately
asst	assorted, assortment
avail	available
cm	centimeter
diff	different
dk	dark
Fat 1/8(s)	Fat Eighths (9in x 22in)
FQ(s)	Fat Quarter(s) (18in x 22in)
ft	foot
in	inch
HST	Half Square Triangle
lg	large
mat	materials
med	medium
min	minimum
mm	millimeter
opt	optional
oz	ounce
pc(s)	piece(s)
pkg(s)	package(s)
PFD	Prepared for Dyeing (fabric prewashed or purchased as “PFD”)
qt	quart
sm	small
sq(s)	square(s)
sz	size
WOF	width of fabric (from selvage to selvage)
wt	weight
yd(s)	yard(s)
3-D	three-dimensional
“Design Wall”—bring muslin, flannel, or batting to be taped to the wall.	

CLASSES BY CATEGORY

**APPLIQUÉ: FUSIBLE**

- 208 Teeny Tiny Flamingo Collage, *Laura Heine*
- 304 Flowerfly Collage Class, *Laura Heine*
- 407 Teeny Tiny Flamingo Collage, *Laura Heine*

**APPLIQUÉ: HAND**

- 303 Dazzling Dogs Fabric Collage, *Jane Haworth*
- 415 Sunlit Sunflowers Fabric Collage, *Jane Haworth*

**APPLIQUÉ: MACHINE**

- 210 Innovative Appliqué—Ogee Lotus, *Karen K. Stone*
- 305 Shellfire and Clamnation, *Karen K. Stone*

**ART QUILT**

- 208 Teeny Tiny Flamingo Collage, *Laura Heine*
- 210 Innovative Appliqué—Ogee Lotus, *Karen K. Stone*
- 303 Dazzling Dogs Fabric Collage, *Jane Haworth*
- 304 Flowerfly Collage Class, *Laura Heine*
- 415 Sunlit Sunflowers Fabric Collage, *Jane Haworth*

**COLLAGE**

- 208 Teeny Tiny Flamingo Collage, *Laura Heine*
- 303 Dazzling Dogs Fabric Collage, *Jane Haworth*
- 304 Flowerfly Collage Class, *Laura Heine*
- 407 Teeny Tiny Sewing Machine Collage, *Laura Heine*
- 415 Sunlit Sunflowers Fabric Collage, *Jane Haworth*

**COLOR**

- 206 Lone Starburst II, *Kimberly Einmo*
- 207 Over and Under Rainbows, *Gyleen X. Fitzgerald*
- 208 Teeny Tiny Flamingo Collage, *Laura Heine*
- 302 Modern Free Wheeling Circles, *Gyleen X. Fitzgerald*
- 303 Dazzling Dogs Fabric Collage, *Jane Haworth*
- 315 Party Lights, *Sarah Maxwell*
- 406 Flying Geese Crossing, *Kimberly Einmo*
- 415 Sunlit Sunflowers Fabric Collage, *Jane Haworth*

**COMPUTER USE: HANDS-ON**

- 220 DIY Inkjet Printing on Fabric—Hands-on, *Jennifer Rapacki*
- 231 Fractal That! Design—Designing Fabric the Fun and Easy Way, *Jennifer Rapacki*

**DESIGN**

- 207 Over and Under Rainbows, *Gyleen X. Fitzgerald*
- 209 Shazam, *Sarah Maxwell*
- 220 DIY Inkjet Printing on Fabric—Hands-on, *Jennifer Rapacki*
- 231 Fractal That! Design—Designing Fabric the Fun and Easy Way, *Jennifer Rapacki*
- 302 Modern Free Wheeling Circles, *Gyleen X. Fitzgerald*
- 303 Dazzling Dogs Fabric Collage, *Jane Haworth*
- 304 Flowerfly Collage Class, *Laura Heine*
- 315 Party Lights, *Sarah Maxwell*
- 400 Divide and Design, Get It Done!—Longarm Hands-on, *Lisa H. Calle*
- 425 Sew On the Go, *Sarah Maxwell*

**MIXED MEDIA: PRINT/INK**

- 220 DIY Inkjet Printing on Fabric—Hands-on, *Jennifer Rapacki*
- 231 Fractal That! Design—Designing Fabric the Fun and Easy Way, *Jennifer Rapacki*

**MODERN**

- 221 Walking Foot Quilting—Get Out of the Ditch!, *Catherine Redford*
- 232 Further Steps in Walking Foot Quilting, *Catherine Redford*

**MYSTERY**

- 205 Progressively Surprised—Progressive Class, *Charlotte Angotti*
- 300 Let Me Surprise You!, *Charlotte Angotti*
- 301 Progressive with a Twist Mystery Quilt Class—Progressive Class, *Kimberly Einmo*
- 405 Let Me Surprise You! One More Time, *Charlotte Angotti*
- 409 The Other Mystery—Progressive Class, *Karen K. Stone*

**PIECING: HAND**

- 425 Sew On the Go, *Sarah Maxwell*

**PIECING: MACHINE**

- 205 Progressively Surprised—Progressive Class, *Charlotte Angotti*

- 206 Lone Starburst II, *Kimberly Einmo*

- 207 Over and Under Rainbows, *Gyleen X. Fitzgerald*

- 209 Shazam, *Sarah Maxwell*

- 300 Let Me Surprise You!, *Charlotte Angotti*

- 301 Progressive with a Twist Mystery Quilt Class—Progressive Class, *Kimberly Einmo*

- 302 Modern Free Wheeling Circles, *Gyleen X. Fitzgerald*

- 315 Party Lights, *Sarah Maxwell*

- 405 Let Me Surprise You! One More Time, *Charlotte Angotti*

- 406 Flying Geese Crossing, *Kimberly Einmo*

- 410 ColourBugs & Curves, *Linda Sullivan*

**QUILTING: BEGINNING**

- 215 Rulers for Rookies—Longarm Hands-on, *Lisa H. Calle*

- 221 Walking Foot Quilting—Get Out of the Ditch!, *Catherine Redford*

- 230 Feathers for the Timid—Longarm Hands-on, *Lisa H. Calle*

- 233 Feel the Rhythm—Learn the Basics of Free-Motion Quilting—Capri Hands-on, *David Taylor*

- 310 Perfect Plumes—Longarm Hands-on, *Lisa H. Calle*

- 320 Pebbles, Echoes, and Crosshatches, Oh MY!—Longarm Hands-on, *Lisa H. Calle*

- 408 Yes, You CAN Free-Motion Quilt!, *Jenny K. Lyon*

**QUILTING: GENERIC**

- 222 What to Look for in a Stationary Sit-Down Longarm HQ Capri Hands-on, *David Taylor*

- 306 Timing and Tension—Take Control of Your Free-Motion Quilting—Capri Hands-on, *David Taylor*

- 400 Divide and Design, Get It Done!—Longarm Hands-on, *Lisa H. Calle*

- 416 Fill in the Blanks—Fun, Free-Motion Designs—Capri Hands-on, *David Taylor*

**QUILTING: LONGARM/MID-ARM HANDS-ON**

- 215 Rulers for Rookies—Longarm Hands-on, *Lisa H. Calle*

- 222 What to Look for in a Stationary Sit-Down Longarm—HQ Capri Hands-on, *David Taylor*

- 230 Feathers for the Timid—Longarm Hands-on, *Lisa H. Calle*

- 233 Feel the Rhythm—Learn the Basics of Free-Motion Quilting—Capri Hands-on, *David Taylor*

- 306 Timing and Tension—Take Control of Your Free-Motion Quilting—Capri Hands-on, *David Taylor*

- 310 Perfect Plumes—Longarm Hands-on, *Lisa H. Calle*

- 320 Pebbles, Echoes, and Crosshatches, Oh MY!—Longarm Hands-on, *Lisa H. Calle*

- 400 Divide and Design, Get It Done!—Longarm Hands-on, *Lisa H. Calle*

- 416 Fill in the Blanks—Fun, Free-Motion Designs—Capri Hands-on, *David Taylor*

- 426 Longarm Ruler Roundabout!—HQ Capri Hands-on, *Megan Best*

**QUILTING: MACHINE**

- 221 Walking Foot Quilting—Get Out of the Ditch!, *Catherine Redford*

- 232 Further Steps in Walking Foot Quilting, *Catherine Redford*
- 325 Free-Motion Fills and Frills on a Domestic Machine, *Jenny K. Lyon*

- 408 Yes, You CAN Free-Motion Quilt!, *Jenny K. Lyon*

**ROTARY CUTTING**

- 206 Lone Starburst II, *Kimberly Einmo*

- 207 Over and Under Rainbows, *Gyleen X. Fitzgerald*

- 209 Shazam, *Sarah Maxwell*

- 301 Progressive with a Twist Mystery Quilt Class—Progressive Class, *Kimberly Einmo*

- 315 Party Lights, *Sarah Maxwell*

- 406 Flying Geese Crossing, *Kimberly Einmo*

**SEWING**

- 302 Modern Free Wheeling Circles, *Gyleen X. Fitzgerald*
- 409 The Other Mystery—Progressive Class, *Karen K. Stone*

**TOOLS FOR QUILTMAKING**

- 207 Over and Under Rainbows, *Gyleen X. Fitzgerald*

## THURSDAY CLASSES AND SPECIAL EVENTS

## WEDNESDAY

JULY 8

TOUR 9 AM-5 PM

Please join us for a day visiting local shops and historic areas for inspiration as well as shopping. Bus departs from and returns to the convention center. Price includes transportation, all entrance and/or entertainment fees, tour guide, and gratuities.

**100 LA FASHION DISTRICT TOUR** \$85

See California's Fashion District through the eyes of Joe Vecchiarelli! Joe is a Certified Fit Specialist for the television and apparel industry, and currently works on ABC-TV's hit show "Dancing with the Stars." Joe will be on the bus with you to provide commentary and behind-the-scenes stories in this unique and special tour opportunity.

First stop is downtown LA at the **Los Angeles Fashion District** ([www.fashiondistrict.org](http://www.fashiondistrict.org)) to wander and shop. Dropoff point is at **Michael Levine's** ([www.mlfabric.com](http://www.mlfabric.com)), a discount source offering fabric of all kinds from the biggest manufacturers along with notions, trims, beads, ribbons, silks, and upholstery.

Regroup for a quick ride over to the historic **Grand Central Market** where you can grab lunch on your own from a selection of over 30 eateries. After lunch, Joe has arranged for a special private tour of the Fashion Institute of Design and Merchandising. FIDM Collections currently hold over 15,000 objects of high fashion, covering more than 200 years of history.

The last stop of the day is **Mood** ([www.moodfabrics.com](http://www.moodfabrics.com)). It's the one featured on the show "Project Runway" and one of Joe's favorite shopping spots. *Note: We have tried to streamline and anticipate traffic time in Los Angeles. However, should traffic or highway construction alter our itinerary/arrival times, please settle back, and enjoy Joe's stories!*

## THURSDAY

JULY 9

TOUR 8:30 AM-5 PM

Please join us for a day visiting local shops and historic areas for inspiration as well as shopping. Bus departs from and returns to the convention center. Price includes transportation, all entrance and/or entertainment fees, lunch, tour guide, and gratuities.

**200 RJR AND HOFFMAN FABRICS TOUR** \$110

**RJR Fabrics** ([www.rjrfabrics.com](http://www.rjrfabrics.com)) in Torrance, CA is a great first stop to begin our day! Enjoy a tour of their fabric design and printing processes and see their warehouse where all of those beautiful fabrics get their start.

Next, head south to Costa Mesa, home of **Piecemakers Country Store** ([www.piecemakers.com](http://www.piecemakers.com)). Established in 1978, Piecemakers has grown into a thriving quilt shop and country store which offers gifts, quilts, antiques, fabrics, notions, books, and patterns. Lunch in their tea room is included in the tour price.

Finish up with a visit to **Hoffman California-International Fabrics** ([www.hoffmancaliforniafabrics.net](http://www.hoffmancaliforniafabrics.net)). Begun in 1924 by Rube Hoffman, it has played an important role in the growth of California's textile industry. Sons Philip and Walter joined the company in the 1950s, and their love of surfing and the beach influenced Hoffman's designs. Today, three generations of Hoffmans are actively involved in day-to-day operations. The Design Department creates more than 800 designs of colorful screen prints and luscious Bali batiks each year. *Note for this tour only—register by June 30 to guarantee your seat. Late registrants subject to space available.*

## THURSDAY

JULY 9

ALL-DAY CLASSES  
9 AM-5 PM  
LUNCH BREAK NOON-2 PM**205 PROGRESSIVELY SURPRISED—PROGRESSIVE CLASS** \*\$190B/I,D,PJ,SM *Charlotte Angotti*

Don't miss the most creative curriculum offered at Festival! Angotti contributes her talent and humor to this laser cut kitted mystery class. Enjoy this project as is, or combined with complementary projects offered in the other two Progressive Classes. Join us at Saturday's lecture (420) to see the grand reveal of how these three teachers have combined their projects into knock-out quilt tops! Progressive Class—this class may be taken singularly or in conjunction with Kimberly Einmo's class (301) on Friday and/or Karen Stone's class (409) on Saturday. You may enroll for one, two, or all three. Fabrics may differ from photo.

\*CLASS PRICE - \$85 + MAT FEE - \$95 + EQUIP FEE - \$10 = \$190

SUPPLIES—pins; seam ripper.

**206 LONE STARBURST II** \*\$104I,PJ,PC,AP,SM *Kimberly Einmo*

Learn to strip-piece and cut diamond building blocks from strips

using either Einmo's Precision Jelly Roll Ruler or Precision Precuts Ruler with no "Y" or set-in seams. Design your own unique Lone Starburst variation quilt! First, focus on accurate and efficient cutting and piecing of the diamond units, then focus on design elements and the almost limitless possibilities for designing your own layout using your diamond units. The real magic comes from the fact that this quilt is assembled with straight-set blocks, not diamond wedges or blocks on point—magic!

\*CLASS PRICE - \$85 + MAT FEE - \$6 + EQUIP FEE - \$13 = \$104

SUPPLIES—

[www.KimberlyEinmo.com](http://www.KimberlyEinmo.com)

**207 OVER AND UNDER RAINBOWS** \*\$120E,PJ,SM *Gyleen X. Fitzgerald*

Modern with a twist! "Knot" as hard as you think! It's visually dynamic with fast easy piecing. Don't let cutting "tie" you up. All you need is one 2.5in strip set and 3.5yds of background.

\*CLASS PRICE - \$85 + MAT FEE - \$25 + EQUIP FEE - \$10 = \$120

SUPPLIES—[www.colourfulstitches.com/workshops.html](http://www.colourfulstitches.com/workshops.html) (Materials fee includes Angle Trim Tool and pattern; sewing machines are provided.)



**208 TEENY TINY FLAMINGO COLLAGE** \*\$140

**E,PJ** *Laura Heine*

Craft this Heine design and learn how to work with small scale prints and underlay fabrics to create dimension. Master techniques that will allow you to move on to more difficult patterns. Frame your collage or finish as a wall quilt. Kit may vary slightly from photo.

\*CLASS PRICE - \$85 + MAT FEE - \$55 = \$140

**SUPPLIES**—Karen Kay Buckley med blue handled Perfect Scissors with serated edges\*; scissors (paper cutting); small trash bag; rotary cutter (45mm); rotary cutting mat (12in x 17in); rotary cutting ruler (3in x 12in); fine-tip black Sharpie pen; 3yds 12in wide Steam-a-Seam 2 (no substitutes)\*; #2 pencil; Goddess Appliqué Pressing Sheet or Precision Fusing Mat (17in x 24in)\*; 19in x 23in piece of Pattern Ease foundation cut to size\*; \*available for purchase in class.



**209 SHAZAM** \*\$115

**E,D,PJ,SM** *Sarah Maxwell*

Learn how to morph a traditional block into an original shape by adding or subtracting seam lines. Expanding on concepts in her new book, *Fresh, Modern Quilts from Traditional Blocks*, this class

will give you the confidence to try your own variations of traditional blocks.

\*CLASS PRICE - \$85 + MAT FEE - \$20 + EQUIP FEE - \$10 = \$115

**SUPPLIES**—neutral sewing thread; thread snips; pins; mechanical pencil; paper & pen; small trash bag; rotary cutter (45mm); rotary cutting mat (12in x 18in or larger); rotary cutting ruler (6in x 12 in or 6in x 24in); fabric for "Design Wall"; fine-tip black Sharpie pen or fabric marking pen; seam ripper. Fabric: ¼yd each of ten diff prints in asst colors; 1yd background. Template set is included in mat fee. Visit [www.designsbysarahj.com/lectures-and-workshops.htm](http://www.designsbysarahj.com/lectures-and-workshops.htm) for supply list to make larger quilt.



**210 INNOVATIVE APPLIQUÉ—** \*\$90  
**OEGEE LOTUS**

**I/A,PJ,PC** *Karen K. Stone*

Machine appliqué and grid work come together in this interpretation of a timeless motif. Stone's unique approach to preparation and positioning for appliqué promises success and delight as your wonderful block comes together. Your basted work will travel home easily for finishing options offered in class.

\*CLASS PRICE - \$85 + MAT FEE - \$5 = \$90

**SUPPLIES**—scissors (fabric cutting); pins; rotary cutter (med); rotary cutting mat (med); marking pencil/pen/friction pen/chalk that you can see on your fabric; padded pinnable ironing board (thick enough for pins stuck vertically to stand up firmly) suggests June Taylor's Cushioned Quilter's Square N' Blocker. Alternatively, tape together min 11in x 17in layers of foam core, and cover with fabric.

Fabric: recommends solids or solid-reading for lotus figure and background. You may use a total of only two contrasting fabrics (¼yd to ½yd each) or full or partial gradations in two contrasting groups (fat ¼ to FQ each).

**MORNING LONGARM CLASS**  
**8 AM-NOON**



**215 RULERS FOR ROOKIES—** \*\$134  
**LONGARM HANDS-ON**

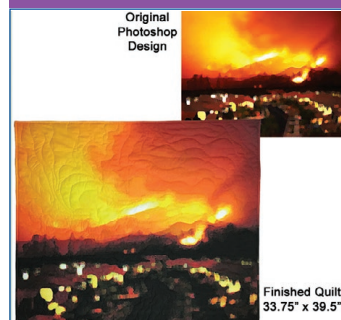
**B,LA** *Lisa H. Calle*

So you're not ready for the Major Leagues when it comes to working with rulers? No worries! Enjoy four full hours of ruler action in this comprehensive hands-on class incorporating not only straight edges and circles, but some of the other Quilter's Groove Rulers as well. Calle will coach her team of "temporary" Rookies to victory while working on the Ohio Star quilt block panel and soon have you ready for the Pros!

\*CLASS PRICE - \$85 + MAT FEE - \$35 + EQUIP FEE - \$14 = \$134

**SUPPLIES**—scissors; notebook/sketch paper.

**MORNING CLASSES**  
**9 AM-NOON**



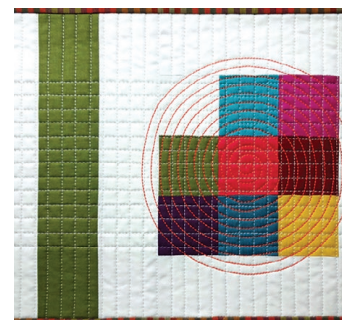
**220 DIY INKJET PRINTING ON FABRIC—HANDS-ON** \*\$51

**B,PC,AP,CH** *Jennifer Rapacki*

Learn how to use Photoshop Element to print fabric at home or yardage at print-on-demand services like ModernYardage, Spoonflower, or FabricOnDemand. Topics include: photo lighting, sizing files, creating FQ or yd size files with more than one photo or project, color, repeats, labels, and text. No experience with Photoshop Elements is required but students need to have basic computer skills such as the ability to load software, use a mouse or trackpad, find and open the software, and find files on their computer. More info at [www.JenniferRapacki.com/printthat](http://www.JenniferRapacki.com/printthat)

\*CLASS PRICE - \$45 + MAT FEE - \$3 + EQUIP FEE - \$3 = \$51

**SUPPLIES**—fully charged laptop (PC or Mac) and portable charger battery pack sufficient to last for 3hr class; power cord; mouse & mouse pad (spare battery if mouse is cordless); Photoshop Elements version 11-16 or latest loaded on computer (free 30 day trial version is available on [Adobe.com](http://Adobe.com) website to try before purchase). Contact Jennifer before the class with questions at [Jennifer.Rapacki@gmail.com](mailto:Jennifer.Rapacki@gmail.com)



**221 WALKING FOOT QUILTING** \*\$60  
**—GET OUT OF THE DITCH!**

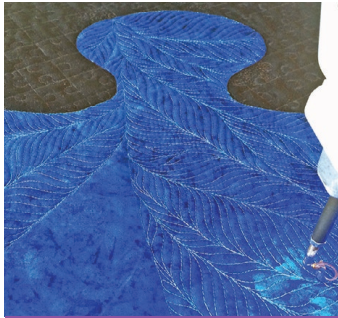
**E,PC,AP,SM** *Catherine Redford*

Confidently finish your quilts on a domestic machine with all the control of your walking foot! Start with a brief discussion on preparing your quilts for quilting, including marking. Then make some samples of different styles including modern grids, matchstick quilting, altered stitches, and spirals. A fast paced class. QATV series 1400, FW, *Modern Machine Quilting* DVD and book.

## THURSDAY &amp; FRIDAY CLASSES AND SPECIAL EVENTS

\*CLASS PRICE - \$45 + MAT FEE - \$10 +  
EQUIP FEE - \$5 = \$60

**SUPPLIES**—scissors (fabric cutting); paper & pen; small trash bag; six 12in sqs low loft cotton batting; blue Painter's tape. Fabric: ten 12in sqs solid color; two 12in sq pieced blocks of any design.



**222 WHAT TO LOOK FOR IN A STATIONARY SIT-DOWN LONGARM —HQ CAPRI HANDS-ON** \*\$89

**E,PC,SLA** *David Taylor*

Frustrated with cramming your quilt into the small throat of your domestic machine? Thinking about upsizing to a stationary sit-down longarm? David Taylor has been quilting on these machines for more than a decade and will introduce you to all the exciting, easy features of the HQ Capri by Handi Quilter. [www.DavidTaylorQuilts.com](http://www.DavidTaylorQuilts.com)

\*CLASS PRICE - \$65 + MAT FEE - \$16 +  
EQUIP FEE - \$8 = \$89

**SUPPLIES**—thread snips; paper, pen, & pencil; Machingers® gloves or similar (opt).

**AFTERNOON LONGARM CLASS**  
1-5 PM



**230 FEATHERS FOR THE TIMID—LONGARM HANDS-ON** \*\$134

**B,D,LA** *Lisa H. Calle*

Do you love the idea of incorporating beautiful feathers into your design, yet feel that achieving such a look is way out of your league? Come on now, banish the shyness of creating feathers. Join Calle as she introduces and demonstrates the first 5 feathers she generated using her longarm. Become confident by drawing and stitching in class, which will enable you to find a unique and personal look to your feathers.

\*CLASS PRICE - \$85 + MAT FEE - \$35 +  
EQUIP FEE - \$14 = \$134

**SUPPLIES**—thread snips; eraser; notebook/drawing pad; favorite drawing pen or pencil.

**AFTERNOON CLASSES**  
2-5 PM



**231 FRACTAL THAT! DESIGN— \*\$51 DESIGNING FABRIC THE FUN AND EASY WAY**

**E,D,PC,AP,CH** *Jennifer Rapacki*

Learn how to create stunning designs with the Frax HD app on your iPad which can be printed on fabric for modern wholecloth quilts or used as an appliqué pattern. Info will also be provided on printing at home or online. For more info and samples go to [www.JenniferRapacki.com/fractal](http://www.JenniferRapacki.com/fractal)

\*CLASS PRICE - \$45 + MAT FEE - \$3 +  
EQUIP FEE - \$3 = \$51

**SUPPLIES**—fully charged iPad 2 or newer, or iPad mini (app will also run on iPhone 4S or newer, and 5<sup>th</sup> generation iPod touch) and portable charger battery pack sufficient to last for 3hr class; powercord; prior to class purchase the Fractal app, Frax HD, from the Apple App Store (~\$1.99) and download to your iPad. Then purchase the pro upgrade from within the app

(~\$6.99). If you have questions, contact Jennifer before the class at [Jennifer.Rapacki@gmail.com](mailto:Jennifer.Rapacki@gmail.com)



**232 FURTHER STEPS IN WALKING FOOT QUILTING** \*\$60

**B/I,PC,AP,SM** *Catherine Redford*

You love your walking foot but want to do more? We'll tackle organic curves, sharp turns, square and irregular shaped straight line spirals, and round spirals. With time to try them all, go home with new ideas and the confidence to add fun details to your next quilt. QATV series 1400, FW, *Modern Machine Quilting* DVD and book.

\*CLASS PRICE - \$45 + MAT FEE - \$10 +  
EQUIP FEE - \$5 = \$60

**SUPPLIES**—scissors (fabric cutting); paper & pen; small trash bag; six 12in sqs low loft cotton batting; blue Painter's tape; mechanical chalk pencil; protractor. Fabric: ten 12in sqs solid color fabric; two 12in sq pieced blocks of any design.



**233 FEEL THE RHYTHM— \*\$108 LEARN THE BASICS OF FREE-MOTION QUILTING— HQ CAPRI HANDS-ON**

**B,PC,SLA** *David Taylor*

"You can't play in the orchestra, unless you show up for rehearsal. Before you attend the rehearsal, you need to practice regularly."

This is David's mantra for free-motion quilting. This class will start beginners off with simple movement exercises to strengthen your free-motion abilities. Once you learn the notes, you'll be ready for a symphony! [www.DavidTaylorQuilts.com](http://www.DavidTaylorQuilts.com)

\*CLASS PRICE - \$65 + MAT FEE - \$35 +  
EQUIP FEE - \$8 = \$108

**SUPPLIES**—thread snips; paper, pen, & pencil; Machingers gloves or similar (opt).

**FRIDAY**

**JULY 10**

**ALL-DAY CLASSES**  
9 AM-5 PM  
**LUNCH BREAK NOON-2 PM**



**300 LET ME SURPRISE YOU!** \*\$245

**B/I,PJ,SM** *Charlotte Angotti*

Finally, a class where you know you have all the right fabrics because there is a pre-cut kit waiting for you to make a quilt top designed just for Quilt Festival. Such a relaxing, fun-filled day! Although you will be amazed what you can get done here, you will not finish in class, but you can certainly try! \*\*This class will have a totally different kit from (405) and the kit will be larger.

\*CLASS PRICE - \$85 + MAT FEE - \$150 +  
EQUIP FEE - \$10 = \$245

**SUPPLIES**—pins; seam ripper.



**301 PROGRESSIVE WITH A TWIST MYSTERY QUILT CLASS—PROGRESSIVE CLASS LANDSCAPES** \*\$193

**B/I,PJ,PC,SM** *Kimberly Einmo*

Don't miss the most creative, and most popular, curriculum offered at Quilt Festival! Einmo shares her top tips and tricks for precision piecing without foundations while keeping you on track with humor, encouragement, and a stress-free classroom. Enjoy this kitted mystery as is, or combine with complementary projects offered in the other two Progressive Classes. Join us at Saturday's lecture (420) to see the grand reveal of how these three teachers have combined their projects into knock-out quilt tops! Progressive Class—this class may be taken singularly or in conjunction with Charlotte Angotti's class (205) on Thursday and/or Karen K. Stone's class (409) on Saturday. You may enroll for one, two, or all three.

\*CLASS PRICE - \$85 + MAT FEE - \$95 + EQUIP FEE - \$13 = \$193

**SUPPLIES**—  
[www.KimberlyEinmo.com](http://www.KimberlyEinmo.com)



**302 MODERN FREE WHEELING CIRCLES** \*\$107

**E,PJ,SM** *Gyleen X. Fitzgerald*

Modern and bold stitched with speed and ease with an extra curve or two. Is that possible? This

is Fitzgerald's 2017 Iron Quilter Challenge design. Learn the raw-edge technique to achieve perfect "stress-free" curves without piecing. Experiment with different layouts to produce a unique design. Game on!

\*CLASS PRICE - \$85 + MAT FEE - \$12 + EQUIP FEE - \$10 = \$107

**SUPPLIES**—<http://www.colourfulstitches.com/workshops.html> (Materials fee includes pattern; sewing machines are provided.)



**303 DAZZLING DOGS FABRIC COLLAGE** \*\$110

**E,D,PJ,PC** *Jane Haworth*

In this fabric collage class choose from a Bulldog or Boston Terrier kit that is designed using a bright, abstract color palette. Learn the raw-edge fabric collage technique from Haworth, who uses glue rather fusible to hold the collage together. Also learn how to make your own pattern from a photo of your pet.

\*CLASS PRICE - \$85 + MAT FEE - \$25 = \$110

**SUPPLIES**—scissors (fabric cutting); embroidery scissors (cut to the point); fabric glue with applicator; chalk marking tool; pen; pencil; tweezers; sm bag for scraps; 8in x 10in photo of pet to discuss for own pattern (opt). Fabric: extra brights and prints in colors suitable for the project (opt).



**304 FLOWERFLY COLLAGE CLASS** \*\$213

**E,PJ** *Laura Heine*

Create this fun collaged butterfly quilt using Heine's "Color Fusion" fabric line! Background and borders are all collaged too! Join in for a fun and relaxing day!

\*CLASS PRICE - \$85 + MAT FEE - \$128 = \$213

**SUPPLIES**—Karen Kay Buckley med blue handled Perfect Scissors with serated edges\*; 6yds 24in wide Steam-A-Seam 2 (no substitutes)\*; Goddess Appliqué Pressing Sheet (17in x 24in)\*; #2 pencil; \*available for purchase in class.



**305 SHELLFIRE AND CLAMNATION** \*\$100

**E,PC,SM** *Karen K. Stone*

Classic Clamshells are stunning, and so are their fancy variations! Stone shares her elegant technique for flawless results with ease. Lots of design options, and lots of fun!

\*CLASS PRICE - \$85 + EQUIP FEE - \$5 + EQUIP FEE - \$10 = \$100

**SUPPLIES**—scissors (fabric cutting); scissors (paper cutting); pins; rotary cutter (opt); rotary cutting mat (med); plain thread (like Aurifil); variegated thread (like King Tut); padded pinnable ironing board (thick enough for pins stuck vertically to stand up firmly)

suggests June Taylor's Cushioned Quilter's Square N' Blocker. Alternatively, tape together min 11in x 17in layers of foam core, and cover with fabric. Fabric: prints for larger solid Clamshells; plainer fabrics for smaller and outlined ones. Bring your shopping bag, and throw in some solids. (Total 10-15 FQs or more, for variety, not quantity.)



**306 TIMING AND TENSION —TAKE CONTROL OF YOUR FREE-MOTION QUILTING—HQ CAPRI HANDS-ON** \*\$200

**B/I,PC,SLA** *David Taylor*

We'll start with the basics of how a quilting machine operates and progress to tension control and rhythm. Learn how to properly adjust tension with hands-on lessons regarding needle sizes and thread weights. Find out how easy it is on the HQ Capri. Fun and informative. [www.DavidTaylorQuilts.com](http://www.DavidTaylorQuilts.com)

\*CLASS PRICE - \$125 + MAT FEE - \$60 + EQUIP FEE - \$15 = \$200

**SUPPLIES**—thread snips; paper, pen, & pencil; Machingers gloves or similar (opt).

**MORNING LONGARM CLASS**  
 8 AM-NOON

**310 PERFECT PLUMES—**  
 LONGARM HANDS-ON \*\$134

**B,D,LA**
*Lisa H. Calle*

Feathers—don't let the "idea" of their complexity keep you from taking your quilting up a notch. Incorporate their various shapes and sizes into your next design. With Calle's love of feathers, she will put all your feathering fears to rest.

\*CLASS PRICE - \$85 + MAT FEE - \$35 + EQUIP FEE - \$14 = \$134

**SUPPLIES**—thread snips; eraser; pad of paper (8.5in x 11in); favorite drawing pencil/pen.

**MORNING CLASS**  
 9 AM-NOON

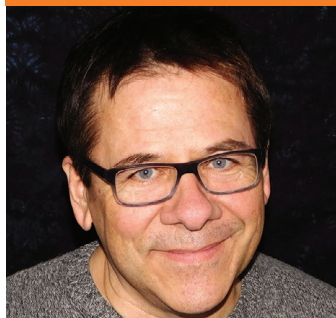
**315 PARTY LIGHTS** \*\$65

**E,D,PJ,SM**
*Sarah Maxwell*

Master the traditional Periwinkle block with no set-in seams using Maxwell's construction techniques and acrylic templates. Pulling lessons from her book, *Fresh, Modern Quilts from Traditional Blocks* she explores color theory and how a progression of color or value updates this traditional block. Rotary cutting and piecing tips and tricks will be the focus of this class.

\*CLASS PRICE - \$45 + MAT FEE - \$15 + EQUIP FEE - \$5 = \$65

**SUPPLIES**—neutral sewing thread; thread snips; pins; mechanical pencil; paper & pen; small trash bag; rotary cutter (45mm); rotary cutting mat (12in x 18in or larger); rotary cutting ruler (6in x 12in or 6in x 24in); fabric for "Design Wall"; fine-tip black Sharpie pen or fabric marking pen; seam ripper. Fabric: ¼yd each of twenty-four diff prints in asst colors or value progression; 4yds background (or 2yd cuts of background to create an additional pinwheel effect in the background). Template set is included in mat fee. Visit <https://www.designsbysarahj.com/lectures-and-workshops.htm> for additional info on fabric choices & options.

**AFTERNOON LECTURE**  
 1-2 PM

**316 WHO AM I TO JUDGE?** \*\*\*\$10

*David Taylor*

Taylor resisted the invitation to judge quilt competitions for many years, until receiving an offer he couldn't refuse. He has now had the privilege of judging contests from every level of competition—county fair, state shows, regional, and international. He'll offer insight on quilt construction and finishing with his usual candor.

**AFTERNOON LONGARM CLASS**  
 1-5 PM

**320 PEBBLES, ECHOES, AND**  
**CROSSHATCHES, OH MY!—**  
 LONGARM HANDS-ON \*\$134

**B,D,LA**
*Lisa H. Calle*

Fills are a beautiful thing to waste and so is your time deciding which one to incorporate into your piece of art. During this hands-on class, dive into the world of fills and gain the insight needed to select just the right fill for your design. Calle will provide the knowledge on how to choose the correct scale for the fill and the correct thread for your piece; ultimately giving you the power to place amazing fills on your quilt. The idea of Pebbles, Echoes, and Crosshatches will no longer be "Oh My", we assure you it will be "Oh Yeah!"

\*CLASS PRICE - \$85 + MAT FEE - \$35 + EQUIP FEE - \$14 = \$134

**SUPPLIES**—thread snips; eraser; pad of paper for drawing (8.5in x 11in); blue washout pen; favorite drawing pencil/pen.

**AFTERNOON CLASS**  
 2-5 PM

**325 FREE-MOTION FILLS AND**  
**FRILLS ON A DOMESTIC**  
**MACHINE** \*\$65

**B/I,PC,SM**
*Jenny K. Lyon*

It's so much more fun to quilt when you can choose from a wide variety

of motifs! Learn the borders, fills, and grids that enhance all genre of quilts from modern to traditional. Experienced beginners welcome.

\*CLASS PRICE - \$45 + MAT FEE - \$15 + EQUIP FEE - \$5 = \$65

**SUPPLIES**—thread snips; paper, pen, & pencil; note/sketch paper (15 sheets 8.5in x 11in unlined or notepad); blue washout pen (some avail for purchase in class); 18in ruler (can share).

**SATURDAY**
**JULY 11**
**ALL-DAY LONGARM CLASS**  
 8 AM-5 PM  
 LUNCH BREAK NOON-1 PM

**400 DIVIDE AND DESIGN**  
**GET IT DONE!—**  
**LONGARM HANDS-ON** \*\$228

**I,D,LA**
*Lisa H. Calle*

Have you observed pieces designed by quilters and thought, "Where do they come up with such originality?" With Calle's three-step process you will approach the idea of quilting in a completely new way. Over the course of this class, divide large areas of your quilt into manageable small spaces, gaining the confidence and skill needed to produce a design that will enhance your quilt as you discover that anyone can transform the everyday quilt into a masterpiece.

\*CLASS PRICE - \$165 + MAT FEE - \$35 + EQUIP FEE - \$28 = \$228

**SUPPLIES**—thread snips; eraser; pencil; drawing pad of paper; straight-edge ruler; blue washout marker.



**ALL-DAY CLASSES**  
9 AM-5 PM  
LUNCH BREAK NOON-2 PM



**405 LET ME SURPRISE YOU!  
ONE MORE TIME** \*\$220

**B/I,PJ,SM** *Charlotte Angotti*

Finally, a class where you know you have all the right fabrics because there is a pre-cut kit waiting for you to make a quilt top designed just for Quilt Festival. Such a relaxing, fun-filled day! Although you will be amazed what you can get done here, you will not finish in class, but you can certainly try! \*\*This class will have a totally different kit from (300) on Friday and the kit will be smaller.

\*CLASS PRICE - \$85 + MAT FEE - \$125 + EQUIP FEE - \$10 = \$220

**SUPPLIES**—pins; seam ripper.



**406 FLYING GEESE CROSSING** \*\$104

**B/I,PJ,PC,AP,SM** *Kimberly Einmo*

Thanks to Einmo's clever design and signature technique for making no-fail Flying Geese units, this gorgeous quilt is comprised of straight set blocks that give the illusion of diagonally set rows. Use those luscious pre-cut strip bundles or favorite fabrics from your stash. Using her Precision Flying Geese & HST Ruler, there is no math, no wasted fabric, and no stress to make Flying Geese! Spend the day creating a glorious quilt that is

easily customizable to fit a wall or any size bed. Become a pro at making Flying Geese from simple strips!

\*CLASS PRICE - \$85 + MAT FEE - \$6 + EQUIP FEE - \$13 = \$104

**SUPPLIES**—

[www.KimberlyEinmo.com](http://www.KimberlyEinmo.com)



**407 TEENY TINY SEWING  
MACHINE COLLAGE CLASS** \*\$142

**E** *Laura Heine*

Make this fun, teeny tiny sewing machine that finishes at 16in x 20in. Frame it on a canvas or make it into a pillow! Perfect for any quilter's studio!

\*CLASS PRICE - \$85 + MAT FEE - \$57 = \$142

**SUPPLIES**—Karen Kay Buckley med blue handled Perfect Scissors with serated edges\*; rotary cutting mat (12in x 17in); rotary cutting ruler (3in x 12in); 3yds 12in wide Steam-A-Seam 2 (no substitutes)\*; Goddess Appliqué Pressing Sheet (17in x 24in) or Precision Fusing Mat (17in x 24in)\*; #2 pencil; \*available for purchase in class.



**408 YES, YOU CAN  
FREE-MOTION QUILT!** \*\$115

**B,PC,SM** *Jenny K. Lyon*

Learn to free-motion quilt in a fun, supportive, and encouraging atmosphere. Draw designs on paper, then move to sample quilt squares. Discover how

the right choice in fabric and notions can significantly improve your work. Learn five versatile motifs, then begin quilting your own work. Anyone can learn to free-motion quilt!

\*CLASS PRICE - \$85 + MAT FEE - \$20 + EQUIP FEE - \$10 = \$115

**SUPPLIES**—thread snips; pencil; note/sketch paper (15 sheets 8.5in x 11in unlined or notepad).



**409 THE OTHER MYSTERY—  
PROGRESSIVE CLASS** \*\$193

**E,PJ,PC,SM** *Karen K. Stone*

The most creative curriculum offered at Festival! Stone contributes her talent and humor to this kitted mystery class. Enjoy the project as is, or combine with complementary projects offered in the other two Progressive Classes. Join us at Saturday's lecture (420) to see the grand reveal of how these three teachers have combined their projects into knock-out quilt tops! Progressive Class—this class may be taken singularly or in conjunction with Charlotte Angotti's class (205) on Thursday and/or Kimberly Einmo's class (301) on Friday. You may enroll for one, two, or all three.

\*CLASS PRICE - \$85 + MAT FEE - \$95 + EQUIP FEE - \$13 = \$193

**SUPPLIES**—scissors (fabric cutting); scissors (paper cutting); pins; rotary cutter (med to lg); rotary cutting mat (med to lg).



**410 COLOURBUGS & CURVES** \*\$105

**E,PJ,PC,AP,SM** *Linda Sullivan*

Two techniques in one class! First, Linda will guide you through her liberating and modern slash 'n sew technique while making cute Colourbug blocks—no ¼in seams to follow and no rules to worry about. Next, she'll demonstrate how to sew perfect curves with no tears and give lots of handy tips and tricks. Both techniques come together in one class while making this cute ladybug quilt!

\*CLASS PRICE - \$85 + MAT FEE - \$10 + EQUIP FEE - \$10 = \$105

**SUPPLIES**—see [www.colourwerx.com/pages/colourbugs-curves-workshops](http://www.colourwerx.com/pages/colourbugs-curves-workshops) to download supply list and pre-class cutting instructions. (Bring all extra fabric to class; sewing machines are provided.)

**MORNING CLASSES**  
9 AM-NOON



**415 SUNLIT SUNFLOWERS  
FABRIC COLLAGE** \*\$60

**B/I,PJ,PC** *Jane Haworth*

As an introduction to fabric collage, this fun sunflower project will give you the freedom of cutting and gluing to make this 16in wallhanging. Haworth's no-rules approach to raw-edge fabric collage uses no pattern pieces or fusible products.

## SATURDAY CLASSES AND SPECIAL EVENTS

\*CLASS PRICE - \$45 + MAT FEE - \$15 = \$60

**SUPPLIES**—scissors (fabric cutting); embroidery scissors (cut to the point); fabric glue with applicator; chalk marking tool; pen; pencil; tweezers; sm bag for scraps. Fabric: extra in colors suitable for project (opt).



**416 FILL IN THE BLANKS—** \*\$108  
**FUN, FREE-MOTION DESIGNS—**  
**HQ CAPRI HANDS-ON**

**B,PC,SLA** *David Taylor*

Staring at open spaces? Not sure which design you want to use on your quilt? Do you hate making feathers? Learn fun ways to fill in the blanks, from easy stippling and loop-de-loop to easy grid work and organic motifs.

[www.DavidTaylorQuilts.com](http://www.DavidTaylorQuilts.com)

\*CLASS PRICE - \$65 + MAT FEE - \$35 +  
EQUIP FEE - \$8 = \$108

**SUPPLIES**—thread snips; paper, pen, & pencil; Machingers® gloves or similar (opt).

**AFTERNOON LECTURE**  
1-2 PM



**420 PROGRESSIVE REVEAL** \*\*\*\$10

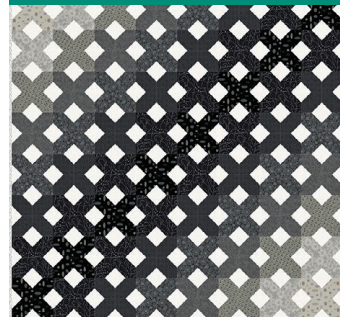
*Charlotte Angotti, Kimberly Einmo,  
Karen K. Stone*

Mind-boggling creativity combined with a collection of enthusiastic students makes for some amazing final projects! Join in the fun as we reveal the work of our three Progressive Class teachers.

Being tasked with designing three separate mystery project classes that could each stand alone or be combined was no small feat for Charlotte Angotti, Kimberly Einmo, and Karen K. Stone; but they exceeded our wildest expectations! Hear from each of these talented teachers as they describe this unique collaborative effort and reveal their personal versions of a final quilt top using the blocks from all three class projects.

You do not need to have taken a Progressive Class to come marvel at the results.

**AFTERNOON CLASS**  
2-5 PM



**425 SEW ON THE GO** \*\$63

**E,D,H,PJ** *Sarah Maxwell*

Portable and oh-sew-relaxing, you'll be addicted to hand piecing once you've learned all the tips and tricks for success. Explore how color and value variations update the classic Cotton Boll block. Then learn all the secrets to prep, mark, and stitch with ease.

\*CLASS PRICE - \$45 + MAT FEE - \$18 = \$63

**SUPPLIES**—neutral sewing thread; pins; mechanical pencil; paper & pen; small trash bag; rotary cutter (18mm or 45mm); rotary cutting mat (6in x 8in or 12in x 18in); fabric for "Design Wall"; fine-tip black Sharpie pen or fabric marking pen. Fabric: ¼-½yd each of eighteen diff prints in asst colors or value progression; 1.5yds background (or two 1yd cuts of background to create addnl background interest). Template set is included in mat fee. Visit [www.designsbysarahj.com/lectures-and-workshops.htm](http://www.designsbysarahj.com/lectures-and-workshops.htm) for additional info on fabric choices & options.

**TOOL TIME**

Sponsored by 

A free educational experience on the show floor that allows you to have hands-on experience with tools and notions from Clover. And you'll make a small project you can take home with you! Come check out the Tool Time area!



**426 LONGARM RULER** \*\$88  
**ROUNDAABOUT!—**  
**HQ CAPRI HANDS-ON**

**PC,SLA** *Megan Best*

Learn how rulers will expand your quilting skills in this fun, hands-on class on a Capri stationary sit-down longarm quilting machine. Rulers and a bit of free-motion fills will be demonstrated. Try many different rulers while learning how to use them easily and safely. Then use those free-motion fills to enhance the shapes, add a stencil or two, and you will have a fabulous quilt.

\*CLASS PRICE - \$65 + MAT FEE - \$15 +  
EQUIP FEE - \$8 = \$88

**SUPPLIES**—thread snips; paper, pen, & pencil; Machingers gloves or similar (opt).

## FESTIVAL RULES

### Show Rules

- We do not page for lost parties. Please arrange ahead of time to meet at a specific time or place if you are separated during the show.
- Do not touch the quilts or textile art on display.
- No food or drink is allowed in the exhibit hall outside the food service area.
- For their safety, children must be attended by an adult at all times.
- Lost & Found will be at the Information Booth in the concourse lobby. Lost and Found for classrooms will be in the Education Office, Room 103C.
- Firearms, weapons, and explosive devices are absolutely prohibited in any area of the convention center under the direction of Quilts, Inc. This includes (but is not limited to) the show floor, exhibit hall, classrooms, meeting rooms, and food areas. Show management reserves the right to ask anyone with these items to remove them or leave the premises.

### Photo Rules

- Photos taken at Festival are not to be used for any commercial purpose or posted on any website which permits images to be used on items such as T-shirts, mugs, note cards, etc. If you post pictures to your account on a "photo-sharing" website, you must also disable any function that would allow ordering the images on any goods.
- You must include an artist credit and note that the photos were taken at International Quilt Festival. Help us to protect the rights of quiltmakers.
- Some exhibits prohibit any photography. Please refer to signage by the exhibit or the floor plan in the center of this magazine.
- Do not photograph an exhibitor's booth without their permission, since items may be proprietary.

### Classroom Rules

- Please turn the sound off on all phones when classes and lectures begin.
- Please be on time and bring all the necessary items required on the materials list.
- Do not take photographs without consent of the instructor.
- All designs, handouts, and instructions are copyrighted and owned by the instructor. Individual instructors have varying policies as to how these items may be used after a workshop. Please check with your instructor before sharing the workshop in any format with others.

## SUMMER 2020 QUILT FESTIVAL LONG BEACH ENROLLMENT INSTRUCTIONS & TIPS

ALL enrollments must be completed via our website at [Quilts.com](http://Quilts.com). Enrollment will remain open continuously throughout the show. You may review or update your schedule at ANY time with your confirmation number. Please review the refund/cancellation policies below.

### HOW TO ENROLL

Go to <http://www.quilts.com/quilt-festival-long-beach.html>

Click on the green **ENROLL ONLINE** button on the left side of the page. Please have your class selections ready prior to starting your registration. You will have a limited amount of time to complete your registration.

- Each person must use a unique email address. Duplicate emails will not be allowed to register. There are no exceptions to this.

### ENROLLMENT INFORMATION

When taking classes, each person must pay the enrollment fee of \$35 (includes repeat admission to the show and a copy of the show program, Q<sup>2</sup>) AND the associated fees for each class, seminar or special event you register for. The badge fee is non-refundable.

### CONFIRMATION OF ENROLLMENT

- Upon completion of your enrollment, you will receive a confirmation email listing your confirmed classes, seminars, and events.
- You may make changes to your enrollment at any time using the link provided in your confirmation email with your confirmation number.
- Badges will no longer be mailed prior to the show. Please bring your enrollment information to the kiosks in the enrollment area to print your badges and pick up your items.

### IMPORTANT DATES AND DEADLINES

- Enrollment opening date will be announced on our website [Quilts.com](http://Quilts.com) and social media.
- There is NO enrollment deadline. You will be able to make changes throughout the show.

### CONTACT INFORMATION

- Email: [enrollment@quilts.com](mailto:enrollment@quilts.com)
- Phone: 877-5-QUILTS (877-578-4587), Monday-Friday 9 AM-1 PM Central Time through July 1.

### REFUNDS/CANCELLATIONS

Changes, cancellations, and refunds must be processed through the online registration system. The refund policy is as follows:

- 100% refunds available until June 10.
- 50% refunds available June 11-25.
- 25% refunds available June 26 through the show.
- Refunds for medical/family emergencies will be handled on an individual basis.
- If cancelling your online enrollment, the \$35 enrollment fee is non-refundable.